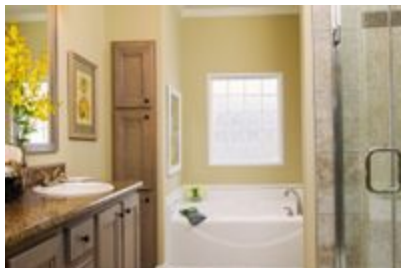




THE CHAPMAN



THE CHAPMAN Model number:

3 beds • 2 baths • 1791 sq.ft. • 28' width • 68' depth

Our home building facilities invest in continuous product and process improvements. Plans, dimensions, features, materials, specifications and availability are subject to change without notice or obligation. Renderings and floor plans are representative likenesses of our homes and may differ from the actual homes. We invite you to tour a Home Center near you and inspect the highest value in quality housing available or call (423) 843-2111 to speak with a Home Consultant. Copyright 2017, CMH. All rights reserved.

<https://www.claytonhomeshixson.com>

CLAYTON HOMES-HIXSON

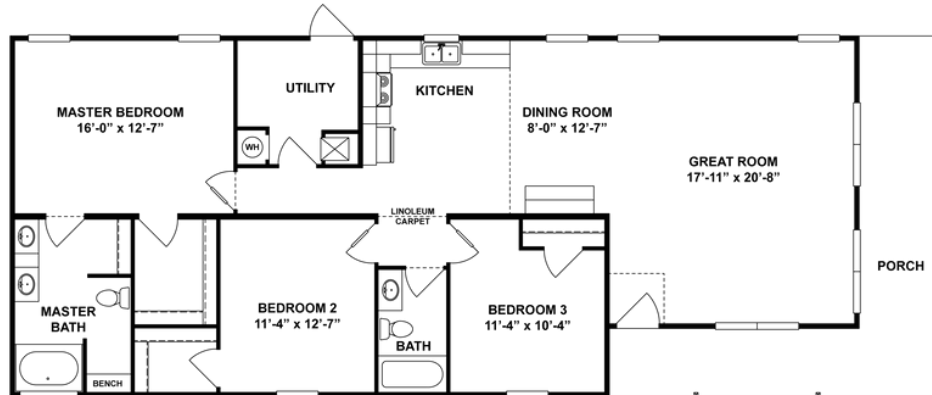
620 BOY SCOUT RD
HIXSON, TN 37343

Monday - Thursday: 9am to 6pm
Friday: 9am to 6pm
Saturday: 9am to 5pm
Sunday: Closed

(423) 843-2111



THE CHAPMAN



THE CHAPMAN Model number:

3 beds • 2 baths • 1791 sq.ft. • 28' width • 68' depth

Our home building facilities invest in continuous product and process improvements. Plans, dimensions, features, materials, specifications and availability are subject to change without notice or obligation. Renderings and floor plans are representative likenesses of our homes and may differ from the actual homes. We invite you to tour a Home Center near you and inspect the highest value in quality housing available or call (423) 843-2111 to speak with a Home Consultant. Copyright 2017, CMH. All rights reserved.

<https://www.claytonhomeshixson.com>

CLAYTON HOMES-HIXSON

620 BOY SCOUT RD
HIXSON, TN 37343

Monday - Thursday: 9am to 6pm
Friday: 9am to 6pm
Saturday: 9am to 5pm
Sunday: Closed

(423) 843-2111